

61st Annual
**WOODLAWN
NEEDLEWORK SHOW**

***Needlework in
Everyday Life***

Artwork from
Mending Life by
Nina & Sonya
Montenegro


WOODLAWN
AND
POPE-LEIGHEY HOUSE

Woodlawn & Frank Lloyd Wright's Pope-Leighey House
Alexandria, VA | March 2024

Visit In Stitches Needlework

- Since 1989 -

Just five minutes from Woodlawn

Custom Framing & Needlework Finishing
Cross-Stitch ♦ Needlepoint
More Than 1000 Finished Models



Your
– full-service –
needlework shop,
right here
in Alexandria!



Bring in this flyer for



– one item –
of your choice

Good March 1–31, 2024



8800-F Pear Tree Court ♦ Alexandria, VA 22309
(703) 360-4600 ♦ institchesneedlework.com

Shop Hours (March 1-31): Mon-Sat 10-3 ♦ Sun 11-3



© 2023 In Stitches Needlework. All rights reserved.

2024 Needlework Show Redwork Sponsor

Director's Welcome

Welcome to the 2024 Annual Woodlawn Needlework Show on behalf of Woodlawn and Pope-Leighey House, Nelly's Needlers, and the National Trust for Historic Preservation. The team of people who planned this year's show are so excited for you to experience this showcase of amazing needlework. I hope you enjoy it as much as I have watching it come together.

Our theme this year explores the needlework of everyday life. For many people, needlework is an artistic expression, something done for leisure. For others it is essential. But for my grandma, Alma Charles, it was both an essential and a creative expression. She was born with a degenerative spinal condition that made it difficult to find clothes off the shelf that fit. So as a young woman her mother taught her to make her own clothing. For the rest of her life most of my grandma's dresses and shirts she created herself. This work was a necessity that she came to love. Grandma also lovingly made clothes for her children and grandchildren. I'll never forget the summer jumper she made for me when I was my cousin's 4-year-old ring bearer.



Grandma Charles in the Park

This year we are so excited to feature a special exhibition by Ruth Tabancay that examines the uses of vintage linens in everyday living. A second exhibition features historic needlework items from the Woodlawn collection. We are also hosting several virtual and in-person programs including a Korean Bojagi workshop led by acclaimed textile artist Youngmin Lee. Bojagi is a tradition that embodies the philosophy of recycling and up-cycling. The Nelly's Needlers will lead several beginner needlework workshops for those who want to get started but aren't sure how. With so much happening, you might want to purchase a show pass so you can come back as often as you like in March to enjoy it all.

Thank you so much for deciding to visit this year's show. I hope you find it enjoyable and inspirational!

Shawn Halifax
Executive Director

The 2024 Needlework Show was made possible in part thanks to these business sponsors. Thank you for your support!

Zebra

"Good News in Alexandria"
thezebra.org





Creative Finds for Creative Minds



HANDPAINTED FIBERS



STITCHING FUN!



SUE SPARGO ELEGANZA



www.ArtisticArtifacts.com



BIRDS GONE WILD

Shop in our Alexandria, VA location or online for WonderFil Specialty Threads for hand and machine. Germany's House of Textile Arts creates Painter's Threads: handpainted, space-dyed fibers & trims in silk, cotton, wool, rayon & metallics. Enjoy fabrics, notions (including a variety of Tulip Needles)... and so much more!

◀ Our 3-Day Creative Minds Summit in April features Judy Gula, Liz Kettle, Gwen Lafleur & Libby Williamson leading exclusive fiber & mixed media classes!



10% Off Entire Purchase*
in our Alexandria store with coupon

One-time use in-store only. *Excludes BERNINA machines, service and accessories; and class registrations. Cannot be combined with any other discount, special or promotion. Expires June 8, 2024.

BERNINA

made to create

Artistic Artifacts is an Authorized BERNINA dealer, offering service & repair with certified technicians on-site and BERNINA Mastery classes & events

4750 Eisenhower Ave. Alexandria, VA 22304 | 703-823-0202 | sales@ArtisticArtifacts.com

2024 Needlework Show Redwork Sponsor

ABOUT THE WOODLAWN NEEDLEWORK SHOW

Since the Woodlawn Needlework Show began sixty-one years ago, the show has grown exponentially to become the largest judged show of needle arts in the nation, displaying thousands of embroidery pieces by artists from all over the world. This year we explore the theme "Needlework in Everyday Life" - from mending to restore, renew, and reuse, to embellishing often mundane items that otherwise go unnoticed; fine details on clothing, a napkin resting on a lap, a bookmark to remember one's place, or a blanket for keeping warm. Needlework has been an integral part of the creation of everyday items, both as a form of function and of beauty, for thousands of years. Throughout history, across cultures and social status, people have stitched for need, for enjoyment, and in remembrance.



This hand-sewn petticoat with fine embroidered detail is attributed to an enslaved seamstress named Sarah, from Charleston, SC. Objects like this convey the level of skill and craftsmanship that enslaved workers produced for their enslavers. c. 1840, Collection of the Smithsonian National Museum of African American History and Culture.



Portrait of Nelly Custis Lewis, by Gilbert Stuart, 1804, National Gallery of Art.

The women of Woodlawn understood the need to mend, but also appreciated the value of needle arts as a way of bringing beauty into their homes and their lives. Nelly Custis Lewis, granddaughter of George and Martha Washington, cross-stitched bookmarks in remembrance of her beloved grandparents. Women enslaved at Woodlawn, like Dolcey, her daughters Nelly and Sukey, and her niece Lucinda, passed down needlework traditions and techniques despite the demands made of them through bondage. Later, women of the Woodlawn Quaker Meeting stitched quilts as a way of maintaining community and family ties across generations.

Today, Woodlawn's Needlework Show honors the needlework tradition and recognizes the importance it has had for countless men and women throughout time. By telling a fuller history at Woodlawn, we attempt to mend and make whole the fabric of a community in need of repair. We lift the lives and work of these women, and all who came before and after, so that their contributions may be recognized and celebrated.

Special Thanks to the Nelly's Needlers

Thank you to the Nelly's Needlers volunteer corps who are instrumental to the success of the show. They collect, organize, and display the needlework pieces and provide a wonderful lunch to visitors.

Special thanks to Deb Kempton and Diane Clark, our Show Chairs, for their tireless, professional work. Additional thanks to Mimi and Rick Barnaby, Susan Fournier, Elizabeth Legge, Ellen Meyer, Paula Philbin, Molly Reynolds and Christy Walker.

Thank you to our local needlework shop, In Stitches, for the countless volunteer hours spent processing mail-in entries. We are very grateful for their continuing support.

Many thanks to the artists who submitted such exquisite pieces to the show this year and to our Needlework Show volunteer hostesses who share the stories of the work to visitors and keep it secure.

2024 Needlework Show Special Exhibitions and Programs

Special Exhibitions

Free with general admission, open everyday of the show from 10:00 AM – 4:00 PM

What Linens Know



Discover the inventive work of nationally recognized artist, Ruth Tabancay, in the exhibit *What Linens Know* which offers a fresh and creative perspective on the theme "Needlework in Everyday Life." In this exhibit, Ruth imagines the history of how various vintage linens may have been used and embroiders images of the remains, in memory. In addition, Ruth explores the idea of reuse in her unique, stitched teabag art piece, "Blankie."



From the Woodlawn Collection: Needleworking Tools

In this new exhibit, explore some of the needleworking tools used by wealthy women like Nelly Custis Lewis in the early 19th-century. Displayed are needleworking aids that reflect a desire for both functionality and aesthetic designs.



Washington D.C. EGA Chapter 50th Anniversary Exhibit

Enjoy an exhibit of needlework from the Washington D.C. Embroiderers' Guild of America (EGA) Chapter as it celebrates its 50th anniversary. This guild chapter is an invaluable community resources for local stitchers, and Woodlawn is honored to celebrate their anniversary in this exhibit.

Virtual Program

Free with suggested donation

March 23, 2024 at 4:00 PM EST

To register for this virtual program, please visit www.woodlawnpopeleighey.org

What Linens Know: A Creative and Contemporary Approach to Needlework in Everyday Life



Enjoy a fascinating presentation by multi-disciplinary artist Ruth Tabancay as she discusses *What Linens Know* on exhibit at the Woodlawn Needlework Show. During the presentation, Ruth explores unconventional concepts using various artistic medium including her stitching of reused, dried teabags to create everyday items such as quilts, bedspreads and clothing. Discover how Ruth's professional and personal histories influence and inspire this work.

2024 Needlework Show Special Exhibitions and Programs

March On-Site Programs

To purchase tickets, please visit www.woodlawnpopeleighey.org

Special Tours of the 61st Woodlawn Needlework Show

Every Wednesday and Friday in March at 2:30 PM

\$18 per person (includes show admission)

Want an in-depth look at Woodlawn's Needlework Show? Join our special tour for a brief history of Woodlawn while discovering the unique stories behind many pieces of the Needlework Show. Led by a Woodlawn guide and a member of Nelly's Needlers.



Beginning Needlework Workshops

March 16th, 25th, and 27th, 3:30 PM - 5:30 PM

\$25 per session or \$65 for all 3 (includes show admission)

Classes are open to adults and children aged 10+

Join members of Nelly's Needlers to learn the basics of three fundamental needlework techniques; counted cross-stitch, canvaswork (needlepoint), and surface embroidery.

Session 1 - Saturday, March 16, 3:30-5:30 pm - Canvaswork coasters

Session 2 - Monday, March 25, 3:30-5:30 pm - Cross stitch towel

Session 3 - Wednesday, March 27, 3:30-5:30 pm - Embroidered hat



February On-Site Program

Lotus Leaf Mat Workshop with Youngmin Lee

February 27th 10:00 AM - 1:00 PM

\$165 per person

Learn traditional Korean needlework techniques at this in-person workshop conducted by renowned textile artist, Youngmin Lee. This workshop will teach you how to construct a lotus leaf shape Sangbo (covering bojagi) that you can use in daily life. Gamchimjil and Kkojipgi techniques and the Yeonbong (Lotus Bud Knot) technique will finish this simple and organically-shaped bojagi with raised line composition.





HAMPTON INN & SUITES
FT. BELVOIR
ALEXANDRIA
8843 Richmond Hwy
Alexandria, VA 22309
(703)619-7026



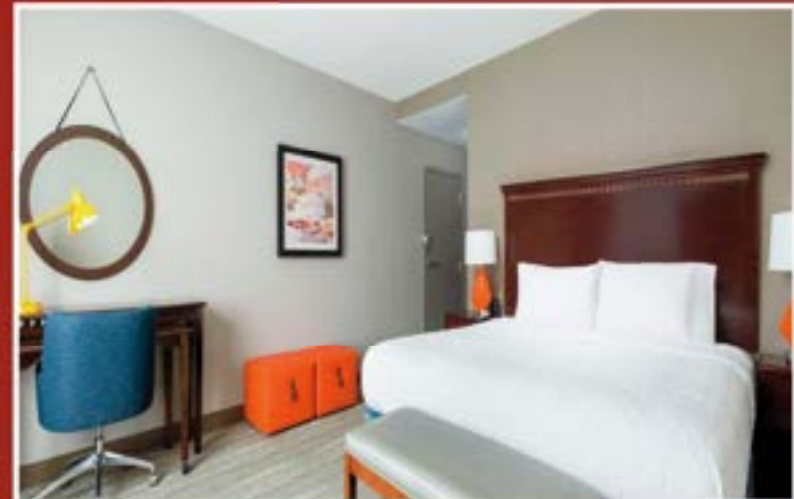
NEWLY RENOVATED

The Hampton Inn & Suites Ft. Belvoir Alexandria
is proud to announce its partnership with
Woodlawn & Frank Lloyd Wright's Pope-Leighey House
as a proud sponsor of the
61st Annual Woodlawn Needlework Show

****DISCOUNTED RATES available for all attendees****

See Details Below:

- Visit our website: www.hilton.com/en/hotels/wasfbhx-hampton-suites-fort-belvoir-alexandria-south/ OR scan the QR Code above.
- Enter your dates.
- Use code: WNS to unlock the discount rate.
- Select your room.



2024 Needlework Show Goldwork Sponsor

Judging at the Annual Woodlawn Needlework Show

This year, the exhibition was judged by three needlearts experts, each having achieved certification through one or more of the three major American needlework organizations - the American Needlepoint Guild, the Embroiderers' Guild of America, and the National Academy of Needlearts. Prior to judging, the Woodlawn staff and volunteers sorted the entries by division, technique, and category. Each entry's information tag is obscured during judging. Techniques are judged together and the largest categories are subdivided to ensure a fair distribution of ribbons. Subdivisions are determined by the total number of entries in each technique. They may include framed vs. soft finish items and specialties such as white work or cross stitch.

ELIGIBILITY

Each entry must be the work of a living person, stitched with a hand-held, threaded needle, and appropriately finished. Articles entered previously in the Woodlawn Needlework Show, as well as crocheted, knitted, and woven items, are ineligible for entry. Woodlawn reserves the right to display items in the manner it deems most appropriate and to refuse items deemed inappropriate for display.

CATEGORIES

Original: a unique design and composition, entirely the product of the stitcher's mind and hands.
Adaptation: a design whose source is from a medium different from that of the entry, such as: china pattern, architectural design, painting, photograph, etc.
Commercial: a work using a designer's pattern for needlework; this includes charts, painted canvases, class projects and kits, etc., and minor alterations thereto.

DIVISIONS

Adult: work by a stitcher 18 years +.
Senior: work by a stitcher 70 years +.
Junior: work by a stitcher 17 years or younger at the time the work was completed. Juniors are divided into 3 divisions - 9 & under, 10-13, and 14-17 years. The work must have been completed within the past year.

NEEDLEWORK TECHNIQUES

Beadwork: Beads stitched together to form a freestanding item, such as a necklace.
Canvaswork: Stitches worked on even, openly woven canvas background.
Traditional: Pieces worked in tent stitch, or in three or fewer different stitches.
Multi-stitch: Pieces worked in four or more different stitches.
Counted Thread: Embroidery worked on an evenly woven ground fabric.
Assisi: Background of a design is worked in cross stitches and outlined in double running stitch.
Blackwork: Straight stitches worked on a light ground fabric forming a geometric pattern, usually stitched in a single color thread, although not always black.
Cross Stitch: Crosses stitched over one or more threads of the ground fabric.
Drawn Thread: Threads are removed from the fabric to create a pattern and the remaining strands are wrapped in groups (including hardanger).
Miniature: Designs stitched over single threads of 32- or higher count background fabric.
Pulled Work: Stitches pulled to open spaces in the ground fabric.
Surface Embroidery:
Brazilian: Surface embroidery using rayon threads.
Crewel: Surface embroidery using two-ply wool yarn on a firm fabric.
Goldwork: Surface embroidery couched or laid to a ground fabric using metal and/or metallic threads.
Japanese Embroidery: Fine silk and metal threads are sewn, laid or couched in traditional Asian or European motifs.
Japanese Bead Embroidery: Beads are stitched on patterned ground cloth using Japanese techniques.
Sashiko: A Japanese quilting technique using running stitches to form geometric patterns on woven fabric.
Silk Ribbon: Surface embroidery worked with silk ribbons.
Stumpwork: Raised embroidery featuring covered forms and wires with silk, cotton or metal threads to create three-dimensional shapes.
Temari: Needlewoven designs on a thread-wrapped ball.
Fine Hand Sewing: Manipulation of finely woven fabrics coupled with fine laces and trims assembled by hand.
Needle Lace: Detached embroidery worked with needle and thread onto foundation threads.
Battenburg: Lace tape shaped and held together by decorative connecting stitches.
Filet Guipure: Knotted, creating a decorative item.
Quilting: Items created with joined layers of fabric and filling that are stitched through all layers to create a design (perimeter limit of 144 inches).
Smocking: Stitches worked over a series of rows, gathering the fabric in even folds or pleats, giving an elastic characteristic to the fabric.

2024 Needlework Show Judge Biographies

Dr. Cheryl Christian judges on the international, national, and local levels and has been chair of NAN's judges' certification program. For her, an embroiderer of many different techniques since early childhood, it is an honor to judge; she is grateful for the opportunity and so very pleased to view the works submitted to Woodlawn's Annual Needlework Show. Christian was editor of EGA's Needle Arts for fourteen years, contributing editor of the Historic Needlework Guild's Fine Lines for six years, and coordinating editor for the ANG's NeedlePointers. She exhibits regularly; lectures nationally and locally on judging and appraising needlework, samplers, quilts, and needlework's connection to history; and conducts workshops on embroidery and quilting.

Pat Goaley is the Chairman of the Embroiderers' Guild of America Needlework Judges Certification Program. A Master Needlework Judge with a Royal School of Needlework Certification and Diploma and two EGA Master Craftsman Certifications, she has studied needlework throughout the world. She has lectured and taught various forms of needlework including Italian, historical, and innovative forms of needlework. She has exhibited original work and is currently exploring couture embroidery.

Georgann Lane has had embroidery in her DNA since her Norwegian ancestors created their first piece of Hardanger. She learned to embroider from her mother covering pillow cases with outline and lazy dazy stitches. Needlework has been a part of Georgann's life through studying Home Economics at Florida State University and continuing through her judging journey. She is committed to sharing the excitement of embroidery and discovering the art of needlework. As an EGA Master Needlework Judge since 2008, her aim is to encourage exhibitors to increase their technical excellence, creativity and love of embroidery.

2024 Judges' Statement

The 2024 Woodlawn Needlework Show celebrates sixty-one years of exhibitions. This year's theme, Needlework in Everyday Life, reflects warmth and comfort in the home.

We were impressed by the quality of the entries and the variety of work submitted for this year's exhibition. We enjoyed viewing each entry. All the needleworkers contributed their best work.

The determination of finalists in each category often came down to minute details. People often ask judges what factored into the choice of one entry over another.

- The submission is clean, free from dirt and foreign materials.
- All components of the needlework are in excellent condition.
- The thread is laid properly in relation to the stitch and foundation material.
- The thread is pristine, not worn; its twist should be maintained throughout the work.
- The thread used in a motif should cover the ground fabric.
- Threads do not carry over on the back as carry-overs are visible on the front.
- Each stitch is well-executed.
- Tension is consistent throughout the piece.
- The needleworker has chosen a well-planned design that reflects unity in the foundation fabric, thread, and color.

While framing was not considered in the judging criteria, we noted that some needlework did not lie flat. We suggest needleworkers secure their needlework to the mounting base so it does not shift. The foundation fabric warp and weft threads should lie at a ninety-degree angle.

We would like to thank Nelly's Needlers for their organization and efficiency. We thank the staff at Woodlawn and the National Trust for Historic Preservation for their support of needlework and needleworkers. Congratulations to everyone who participated. As judges, we appreciate that putting your work forward to be evaluated can be stressful. We were very impressed with all your efforts.

Cheryl Christian, Patricia Goaley, and Georgann Lane

Bespoke Needlework Collections



PROJECT BAGS
AND NOTIONS
FOR THE
DISCERNING
NEEDLEWORKER

THE ELEGANT THREAD

WWW.THEELEGANTTHREAD.STORE



2024 Needlework Show Silk Sponsor

introducing a new embroidery tool...



NATIONAL EMBROIDERY TEACHERS ASSOCIATION

Our online resource makes finding an embroidery teacher easier than ever before.



**Attend a class
in person or
online**

Techniques include:

- | | |
|------------------------|-------------------------------|
| Appliqué | Ecclesiastical Embroidery |
| Appraisal | Fabric Manipulation |
| Art History | Felting |
| Beading / Canvas | Goldwork |
| Painted Canvas | History of Needlework |
| Clothing Embellishment | Japanese Embroidery |
| Color and Design | Judging |
| Contemporary Stitchery | Mixed Media |
| Counted Thread | Raised Embroidery / Stumpwork |
| Crazy Quilting | Samplers |
| Crewel | Silk and Metal |
| Cross Stitch | Surface Embroidery and more! |

**Do you teach
embroidery?**

We'd love to list you!
Click JOIN US on our website
to discover more

For a complete list of experienced teachers, their techniques and programs visit:

www.embroideryteachers.com

Stitch On!



Zebra

Good News in Alexandria
thezebra.org

Proud to be a 2024 Media Sponsor

2024 Special Awards

Eleanor Custis Lewis Award

Best in Show
Becca Foster #524

Director's Awards

Selected by Shawn Halifax, Executive Director
Norma Campbell #473
Debra Lee #710
Melody Ritchie #106

Cathleen R. Durkin Award

Outstanding Children's Workshop Entry
Chase Broadway #795

Emma Matheson Award

Outstanding Work by a Junior
Katie Oxley #585

Woodlawn Award

Outstanding Original Design
Dennis Yeatts #645

Nelly's Needler's Award

Outstanding Adapted Design
Becca Foster #524

Pope-Leighey Award

Outstanding Miniature
Diane Litman #565

Adelaide Bolté Award

Outstanding Senior Entry
Barbara Connell #485

Judge's Choice Awards

Becca Foster #524
Liz Martin #568
Lori Mazza #480

People's Choice Award

To be determined by popular vote. Make sure to vote before you leave the show!

Nelly's Needlers

Nelly's Needlers was established in 1975 to help preserve Woodlawn through the pursuit of fine needlework. This group of dedicated individuals has raised and donated more than \$1,000,000 to Woodlawn through a variety of needlework-related activities. The biggest project is coordinating Woodlawn's Annual Needlework Show. The name, Nelly's Needlers, comes from Eleanor "Nelly" Parke Custis Lewis, the granddaughter of Martha Washington. Nelly was the first owner of Woodlawn, and she learned her needlework skills from her grandmother.

Nelly's Needlers is an inclusive group of stitchers that welcomes all individuals who have a desire to foster the needlework traditions and to support Woodlawn. Whether you are a beginner, expert, or somewhere in between, consider joining Nelly's Needlers to share your passion and use your skills to support this historic home. Email them at needlersnelly@gmail.com for membership information.

Nelly's Café

Nelly's Café is back! Enjoy seated dining in Woodlawn's beautiful Underwood Room. Lunch is served between 11:30 am and 2:00 pm and the proceeds benefit Woodlawn.

Menu

Enjoy our fabulous chicken salad, quiche, famous lemon tarts, and chocolate cake! Take home packages of old-fashioned ginger cookies made from Martha Washington's personal recipe.

Special thanks to Nelly's Needler Ellen Meyer, who is an individual sponsor of the 2024 Needlework Show. Thank you for your support Ellen!

In Memoriam

This member of the Nelly's Needlers has recently gone to the never-ending sewing circle.

Alice Daeschner

In her memory, a contribution has been made to the Woodlawn Endowment Fund.

NELLY'S NEEDLERS 2024 RAFFLE



CROSS STITCH SAMPLER

**HAND STITCHED
BY
NELLY'S NEEDLERS**

TICKETS \$5.00 AVAILABLE AT RAFFLE TABLE
OR CONTACT

BETH BRITT | DESIGNBYAMBIANCE@YAHOO.COM
MARY GILLMARTEN | MGILLMARTEN@GMAIL.COM

DRAWING DATE: MAY 13, 2024

The Winchester Chapter of the Embroiderers' Guild of America Presents...

Our World in Stitches

the 2024 Elaine Evans Embroidery Show

When: Saturday April 20th through Saturday May 11th

Where: Godfrey Miller Center

28 South Loudoun Street Winchester, VA 22620

Join us for a worldwide embroidery adventure, celebrating the diversity of this timeless art form. Experience the artistry with live stitching demonstrations, make-it-take-it kits, and welcoming stitch-ins. We look forward to your creative contributions!

Godfrey Miller Center is the permanent home of the Shenandoah Valley Tapestry, the culmination of 5 years of embroidery collaboration. Our World in Stitches will be open during the Shenandoah Valley Apple Blossom Festival and conveniently located to the Olde Towne Winchester Artisan and Crafter Show, and on Apple Blossom Parade Day both occurring close by.

Please submit your finished embroideres at: tinyurl.com/WinchesterShow2024



call, text or email Tiffany Ford 703-946-0191 tiffany@westofnova.com for more detailed information

Specific show times will be posted on our Facebook Page: Winchester Chapter Embroiderers Guild of America

Join us for a Chapter Meeting the first Thursday of the month at Clarke County Recreation Center, 225 Al Smith Circle Berryville, VA 22611 or a Stitch-in the Second Sunday of the Month at Godfrey Miller Center from 2 pm to 4 pm

Join the Nelly's Needlers for CHILDREN'S NEEDLEWORK CLASSES

Held at Woodlawn

SUMMER WORKSHOP

Students ages 9 - 15 may choose projects from four types of needlework: hand sewing and quilting, crewel embroidery, counted thread, or needlepoint.

Monday - Friday
August 5th - 9th
9:30 am - 2:30 pm

HOLIDAY WORKSHOP

One class offered both morning and afternoon.

December 14th
10am - 12pm or 1pm - 3pm

FOR MORE
INFORMATION,
CALL DEB KEMPTON

703-989-1222



AN SEMINAR 2024

AUGUST 30 - SEPTEMBER 6, 2024

SAVE the DATE

Kansas City
MISSOURI



Discover our Seminar, Class Information, and Registration Process by visiting www.needlepoint.org!

The Virginia Quilt Museum is pleased to announce a

Call For Entries!



ACCEPTING ENTRIES:
January 15 - September 30, 2024

Exhibition July 4 - December 22, 2026 at the Virginia Quilt Museum, Harrisonburg, VA

**We want to see your depictions
of the history of this great commonwealth!**

Visit our website for details and resources.

This project is made possible in part by funding from the Virginia American Revolution 250 Commission.



301 S. Main St.
Harrisonburg, VA
www.vaquiltmuseum.org

VIRGINIA
IS FOR
QUILT
LOVERS

**SCAN TO
APPLY NOW:**





WOODLAWN
AND
POPE-LEIGHEY HOUSE



Upcoming Exhibits at Woodlawn

Opening April 25, 2024

Offerings for Tauxenent: Acknowledging Indigenous Place

This exhibit explores local Indigenous histories of Northern Virginia, including the Doeg People. The Doeg were the first inhabitants of the land where Woodlawn & Pope-Leighey House now sit. This exhibit is in partnership with public history students at George Mason University.

History of Woodlawn

Throughout the house, visitors will engage with the stories of Woodlawn's families like the Lewises, the families they enslaved, including the Parkers, free Black families such as the Hollands who purchased Woodlawn tracts from the Quaker families of Troth and Gillingham, and 20th century preservationist families like the Kesters. These groups participated in the nation's moral struggle over slavery and contributed to the site's important role in the historic preservation movement.


Thank you for attending the 2024 Needlework Show. All proceeds from needle artist registrations, show tickets, Nelly's Café, and the museum shop help ensure our continued preservation and education efforts at Woodlawn & Pope-Leighey House.

Please visit again, and bring a friend to tour the houses, attend an event, participate in a workshop, or just walk the grounds.

Check our website for more details and follow us on social media:

www.woodlawnpopeleighey.org

 @woodlawnandpopeleigheyhouse

 @woodlawnandpopeleighey

FULL SERVICE (AND THEN SOME). No matter how big or small the project, Creative Print Group is well equipped to exceed your needs. Whether you need a few hundred brochures or a few million complex packages, we get the job done. We will always meet your deadline, your goals, and exceed your expectations for quality and customer service.

getting **CREATIVE**
makes all the
difference

2024 Needlework Show Silk Sponsor

Blue Bonnet Studio LLC

Mary Alice Sinton is a JEC certified teacher of Japanese Silk and Bead Embroidery. She offers monthly in-person and Zoom classes in Houston, as well as teaching at both national and regional EGA/ANG events. Her teaching schedule is <https://bluebonnetstudio.com/events>



For more information please call or visit:
<https://bluebonnetstudio.com/meet-mary-alice>,
713-849-9848
maryelvis@sbcglobal.net
Blue Bonnet Studio, LLC
5922 Pebble Bank Lane
Houston, TX 77041



Interested in purchasing a piece from the show? Entries that are for sale by the artist are marked with a purple hang tag. For pricing and contact information, please see the front desk.